

# 2/2-way valves DN 20 to DN 40

For air

Solenoid pilot operated

Internal threads G 3/4 to G 1 1/2

Operating pressure 0.4 to 8 bar



**Stainless  
Steel**

83320

**Twist-on<sup>®</sup>**



## Description (standard valve)

Switching function:	normally closed
Flow direction:	determined
Coil gas temperature:	-40 °C to max. +85 °C
Ambient temperature:	-20 °C to max. +85 °C
Mounting position:	optional, preferably solenoid vertical on top

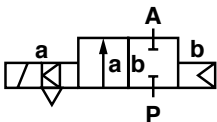
## Material

Body:	Stainless steel (1.4408)
Seat seal:	TPE
Internal parts:	TPU

## Features

- High flow rate
- All internal components captive
- Simple, compact design
- Solenoid interchangeable without tools
- Integrated silencer
- One-piece diaphragm

## Symbol



## Ordering information

To order, quote model number from table overleaf, e.g. 8332400.8171 for a DN 25 valve.

D113402.01  
09/09

Buschjost GmbH  
Valve Technology and Systems

Detmolder Straße 256 Phone ++49 5731/791-0  
D-32545 Bad Oeynhausen D-32545 Bad Oeynhausen Fax ++49 5731/791-179  
PO Box 10 02 52-53 www.buschjost.com  
D-32502 Bad Oeynhausen mail@buschjost.com



## Characteristic data

### Valves

Part Number	Nominal Diameter (mm)	Connection size	Valve length (mm)	Operating pressure		k <sub>v</sub> -value * (Base m <sup>3</sup> /h)	Weight (kg)
				min.	max. (bar)		
8332300.8171	20	G 3/4	95	0.4	8	18	0.92
8332400.8171	25	G 1	95	0.4	8	22	1.01
8332600.8171	40	G 1 1/2	135	0.4	8	59	3.11

\* C<sub>v</sub>-value (US) = k<sub>v</sub>-value x 1.2

State voltage [V] and frequency [Hz]

## Solenoid 8171

### Standard voltages

DC ===	AC ~ 50 Hz	60 Hz
24 V	24 V	24 V
–	110 V	120 V
–	230 V	–

Design acc. to DIN VDE 0580

Voltage range ±10 %

100 % duty cycle


Protection class acc. to EN 60529 IP65

Socket Form A acc. to DIN EN 175301-803 (included)

## Power Consumption

According to DIN VDE 0580 at coil temperature of +20 °C. In operation the power consumption of the solenoid decreases by approx. 30 %.

Solenoid	DC ===	AC ~	
		Inrush	Holding
<b>8171 *</b>	12 W	23 VA	16 VA / 8 W

\*  coil only maintaining the ambient temperature of +65 °C

## Further options (Valves)

XXXXX**54**.XXXX Flange version without valve body

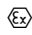
XXXXX**62**.XXXX Crude gas temperature version –20 °C to +100 °C  
Seat seal TPE  
Ambient temperature –40 °C to +85 °C  
Coil gas temperature –20 °C to +85 °C

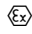
XXXXX**63**.XXXX Crude gas temperature version –20 °C to +140 °C  
Seat seal TPE  
Ambient temperature –40 °C to +85 °C  
Coil gas temperature –20 °C to +85 °C

On request Further versions

## Further options (Solenoids)

XXXXXXX**9151** Solenoid version for low temperature –40 °C

XXXXXXX**8176** Solenoid in protection class  
 II 3 GD EEx nA II T4 T 135 °C

XXXXXXX**8186** Solenoid in protection class  
 II 2 GD EEx me II T4 T 140 °C

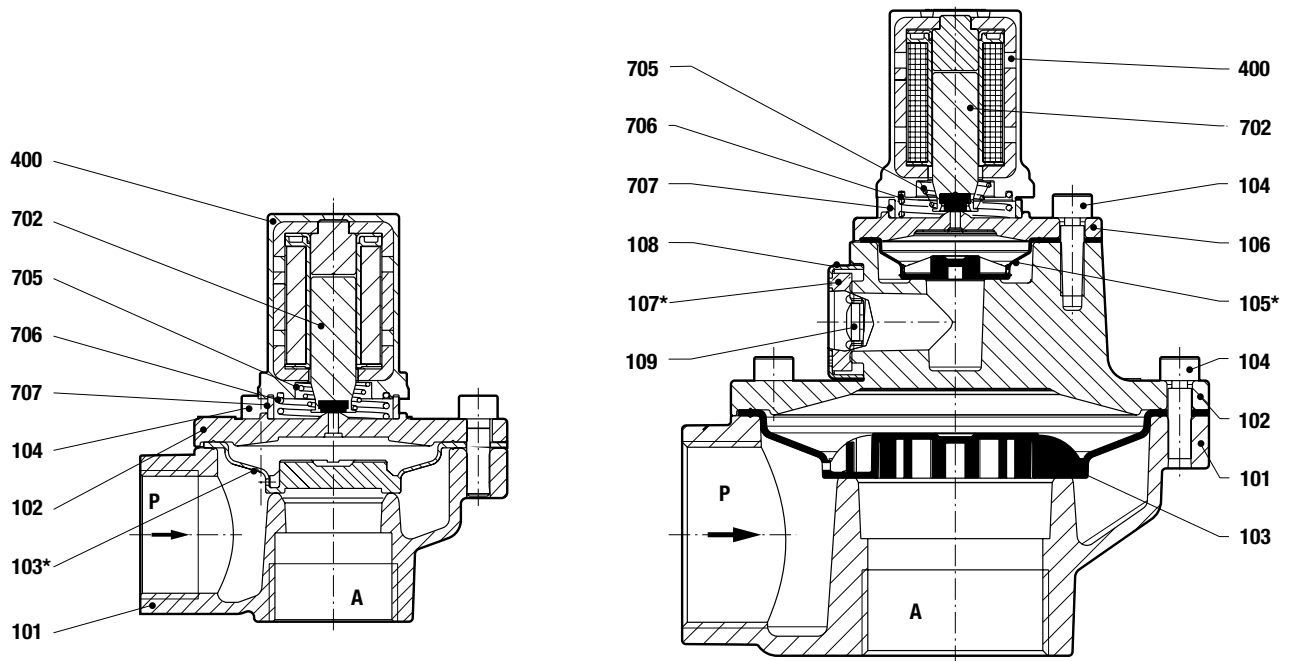
On request Further versions

## Section View

G 3/4

G 1

G 1 1/2



- 101 Valve body
- 102 Valve cover
- \*103 Diaphragm
- 104 Socket head cap screw
- \*105 Diaphragm
- 106 Valve cover
- \*107 Silencer
- 108 Silencer housing
- 109 Socket head cap screw
- \*\* Solenoid complete wearing unit, e.g. 8298000.8170.XXXXX for a solenoid 8170
- 400 Solenoid
- 702 Core
- 705 Pressure spring
- 706 Pressure spring
- 707 Silencer
- 1400 Socket (included)

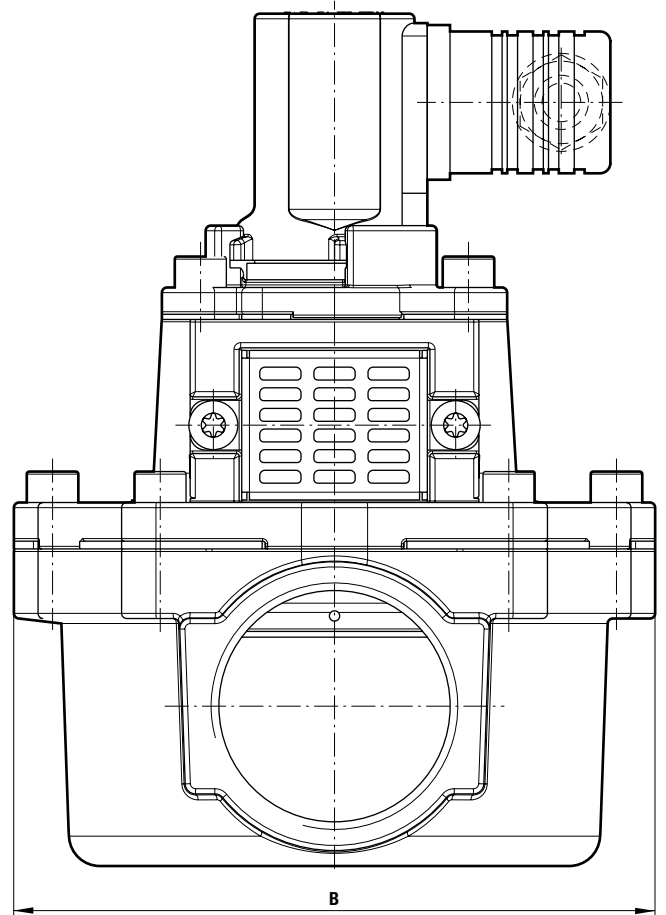
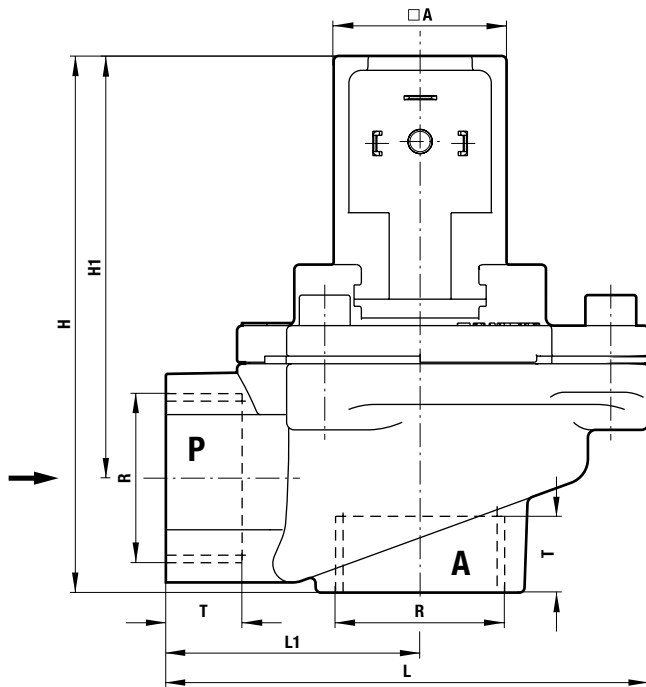
\*/\*\* These individual parts form a complete wearing unit.  
When ordering spare parts please state Cat No and Series No.

### General Dimensions

Solenoid rotatable 3 x 120°  
 Socket turnable 4 x 90°  
 (Socket included)

G 3/4  
 G 1

G 1 1/2



Part Number	Connection size	T (mm)	Ø A (mm)	B (mm)	H (mm)	H1 (mm)	L (mm)	L1 (mm)
8332300.8171	G 3/4	18	34	80	105.5	83	95	50
8332400.8171	G 1	18	34	80	105.5	83	95	50
8332600.8171	G 1 1/2	22	34	124.5	166.0	136	135	70

**Note to Pressure Equipment Directive (PED):**

The valves of this series are according to Art. 3 § 3 of the Pressure Equipment Directive (PED) 97/23/EG. This means interpretation and production are in accordance to engineers practice wellknown in the member countries. The CE-sign at the valve does not refer to the PED. Thus the declaration of conformity is not longer applicable for this directive.

**Note to Electromagnetic Compatibility Guideline (EEC):**

The valves shall be provided with an electrical circuit which ensures the limits of the harmonised standards EN 61000-6-3 and EN 61000-6-1 are observed, and hence the requirements of the Electromagnetic Guideline (2004/108/EC) satisfied.