

# 2/2-way-valves DN 15 to DN 50

For neutral and aggressive gases and liquids

Directly solenoid actuated

Seat valves

Internal threads G 1/2 to G 2

Operating pressure 0 up to 1.5 bar

82670

## Description (standard valve)

Solenoid valve for e. g. town gas, city gas

Switching function:	normally closed
Flow direction:	determined
Fluid temperature:	-10 °C up to max. +90 °C
Ambient temperature:	-10 °C up to max. +50 °C
Mounting position:	valve standing or lying, solenoid at 45° angle

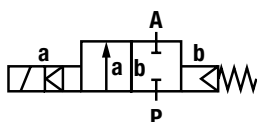
## Material

Body:	Stainless steel (1.4408)
Seat seal:	FPM
Internal parts:	Stainless steel

## Features

- Easy, compact design
- High flow rate
- Solenoid interchangeable without tools (*Click-on*)

## Symbol



## Ordering information

To order, quote model number from table overleaf, e. g. 8267403.9401 for a DN 25 valve.

**Click-on<sup>®</sup>**  
**Stainless Steel**



## Characteristic Data

### Valves

Part Number	Nominal Diameter (mm)	Connection Size	Operating Pressure *		k <sub>v</sub> -value ** (Base m <sup>3</sup> /h)	Weight Total (kg)
			min. (bar)	max. (bar)		
8267203.8301	15	G 1/2	0	0.60	3.0	1.28
8267203.9401	15	G 1/2	0	1.50	3.0	2.24
8267303.9401	20	G 3/4	0	1.00	5.5	2.35
8267403.9401	25	G 1	0	0.40	6.1	2.72
8267503.9401	32	G 1 1/4	0	0.25	8.7	3.26
8267603.8401	40	G 1 1/2	0	0.20	16.3	4.06
8267703.8401	50	G 2	0	0.15	27.6	5.02

\* for gases and liquid fluids up to 25 mm<sup>2</sup>/s (cSt)

State voltage [V] and frequency [Hz]

\*\* C<sub>v</sub>-value (US) ≈ k<sub>v</sub>-value x 1.2

## Solenoid 8300 / 8301; 9401 / 9404 and 8401 / 8404

### Standard voltages

DC ==	AC ~ 40 Hz – 60 Hz	
	24 V	24 V
–	110 V	120 V
–	230 V	220 V

Design acc. to DIN VDE 0580

Voltage range ±10 %

100 % duty cycle

Protection class acc. to EN 60529 IP65

Socket Form A acc. to DIN EN 175301-803 (included)

AC with rectifier plug

## Power Consumption

According to DIN VDE 0580 at coil temperature of +20 °C. In operation the power consumption of the solenoid decreases by approx. 30 %

Solenoid	DC ==	AC ~	
		Inrush	Holding
830x	22 W	25 VA	25 VA
840x *	40 W	45 VA	45 VA
940x	38 W	45 VA	45 VA

\*  coil only

(with the exception of solenoid 94xx up to 41 V AC)

### Attention!

The conditions imposed on the Ex approvals lead to reduction of the permissible standard temperature ranges in the cases of explosion protected solenoids.

## Further Options (Valves)


On request

Further versions, e. g. NPT thread

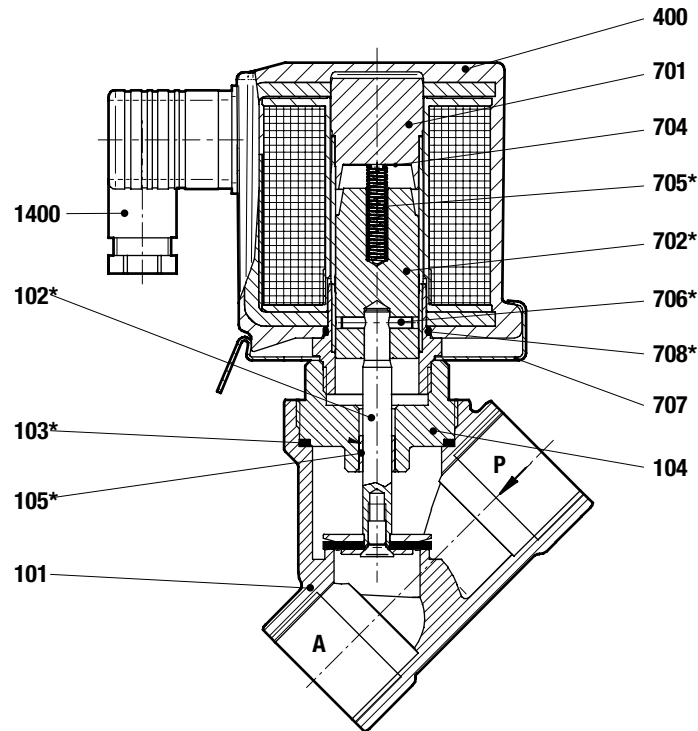
## Further Options (Solenoids)

XXXXXXXX.8441

Solenoid in protection class

 II 2 GD EEx me II T3 T 140 °C

## Section View

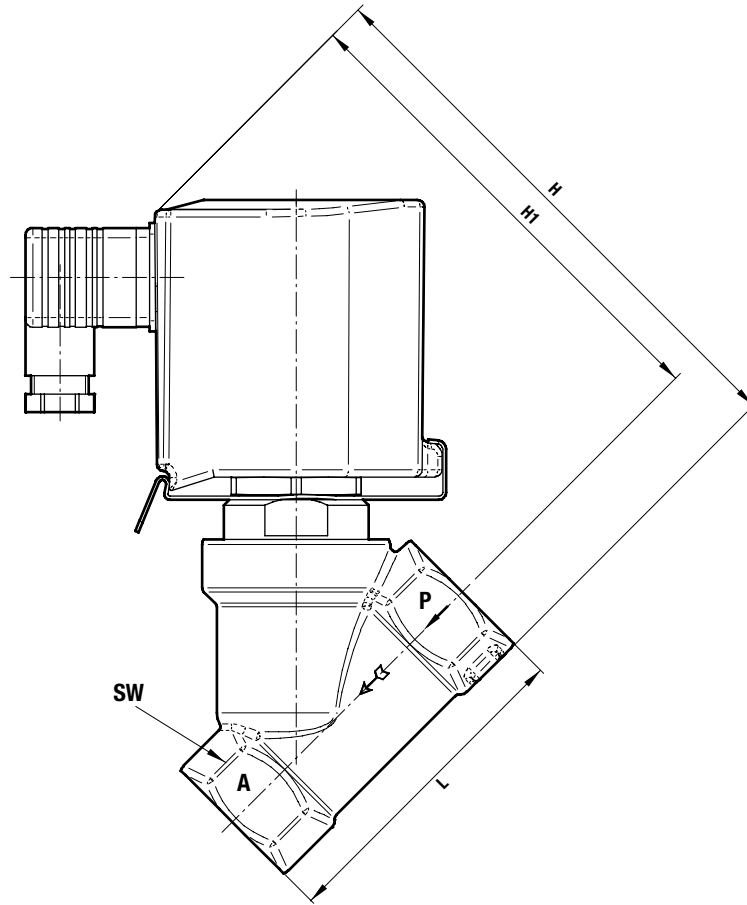


- 101 Valve body
- \*102 Valve spindle
- \*103 Seal ring
- 104 Screw piece
- \*105 Sleeve bearing
- 400 Solenoid
- 701 Core Tube
- \*702 Core
- 704 Round plate
- \*705 Pressure spring
- \*706 Dowel pin
- 707 Spring clip
- \*708 O-ring
- 1400 Socket (included)

\* These individual parts form a complete wearing unit.  
When ordering spare parts please state Cat. No. and Series No.

### General Dimensions

Solenoid rotatable 360°  
 Socket turnable 4 x 90°  
 (Socket included)



Part Number	Nominal Diameter (mm)	Connection Size	L (mm)	H (mm)	H1 (mm)
8267203.8301	15	G 1/2	65	123.40	109.90
8267203.9401	15	G 1/2	65	137.68	125.18
8267303.9401	20	G 3/4	75	145.42	129.92
8267403.9401	25	G 1	90	154.70	134.20
8267503.9401	32	G 1 1/4	110	175.99	151.49
8267603.8401	40	G 1 1/2	120	184.86	136.86
8267703.8401	50	G 2	150	195.58	163.58

#### Note to Pressure Equipment Directive (PED):

The valves of this series, including the connection size DN 25 (G 1), are according to Art. 3 § 3 of the Pressure Equipment Directive (PED) 97/23/EG. This means interpretation and production are in accordance to engineers practice wellknown in the member countries.

The CE-sign at the valve refers not to the PED. Thus the declaration of conformity is not longer applicable for this directive.

For valves > DN 25 (G 1) Art. 3 § (1) No.1.4 applies.

The basic requirements of the Enclosure I of the PED must be fulfilled.

The CE-sign at the valve includes the PED. A certificate of conformity of this directive will be available on request.

#### Note to Electromagnetic Compatibility Guideline (EEC):

The valves shall be provided with an electrical circuit which ensures the limits of the harmonised standards EN 61000-6-3 and EN 61000-6-1 are observed, and hence the requirements of the Electromagnetic Compatibility Guideline (2004/108/EG) satisfied.