

## 2/2-way valves DN 15 to DN 50 with DVGW approval

For neutral burnable gases and other neutral gases

Pressure actuated by external fluid

Seat valves

Internal threads G 1/2 to G 2

Operating pressure 0 to 10 bar

82580



### Description (standard valve)

Switching function:	normally closed
Flow direction:	determined
Mounting position:	optional

### Process fluid characteristics / Valve material

Fluid temperature:	-10 °C up to max. +60 °C
Ambient temperature:	-10 °C up to max. +60 °C
Body:	dezincification brass (CW602N)
Seat seal:	FPM
Body seal:	FPM
Internal parts:	Brass, Stainless steel
Spindle sealing:	PTFE / FPM, self-adjustable



### Pilot fluid characteristics / Actuator material

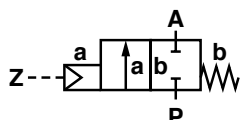
Pilot connection:	G 1/4
Antrieb:	Body: Stainless steel (1.4408)
	Bottom: Alu WEMA-Kor coated
Seat seal:	NBR
Internal parts:	Coated steel

For contaminated fluids insertion of a strainer is recommended.

### Features

- EC type examination certificate  
Product ID-No.: CE-0085 AT0091  
Valve class A Valve group 2
- High function reliability
- Short response time < 1 s
- For robust industry applications
- Qualification approval acc. to EN 161/3394 Part 1

### Symbol



### Ordering information

To order, quote model number from table overleaf, e. g. 8258400.9151 for a DN 25 valve.

## Characteristic Data

### Valves

Part Number	Nominal Diameter (mm)	Connection Size	Operating Pressure *		Pilot Pressure		k <sub>v</sub> -value ** (Base m <sup>3</sup> /h)	Weight Total *** (kg)
			min. (bar)	max. (bar)	min. (bar)	max. (bar)		
8258200.0000	15	G 1/2	0	10	5	8	4.8	1.4
8258300.0000	20	G 3/4	0	10	5	8	10.0	1.5
8258400.0000	25	G 1	0	10	5	8	14.0	1.8
8258500.0000	32	G 1 1/4	0	10	5	8	23.0	2.4
8258600.0000	40	G 1 1/2	0	10	5	8	30.0	2.7
8258700.0000	50	G 2	0	10	5	8	37.0	3.9

\* for gases and liquid fluids up to 400 mm<sup>3</sup>/s (cSt)

State voltage [V] and frequency [Hz]

\*\* C<sub>v</sub>-value (US) ≈ k<sub>v</sub>-value x 1.2

\*\*\* without pilot valve

◇ Hinweis: **0000** without pilot valve  
**0247** with pilot valve for DC  
**0247** with pilot valve for AC

### Notes for 3/2-way pilot valve

Material body brass

Pilot fluid temperature -10 °C up to max. +80 °C

Pilot pressure: p<sub>max</sub> = 8 bar

### Further Options (Valves)

XXXXX50.XXXX Degreased version,  
housing blue painted

XXXXX53.XXXX Optical position indicator

On request Further versions

### Standard voltages

DC ==	AC ~ 50 Hz	AC ~ 60 Hz
24 V	24 V	-
-	110 V	120 V
-	230 V	220 V

Note: This valve type is safety shut off valve and not available in the function „normally open“.

### Data for 3/2-way pilot valve

Design acc. to DIN VDE 0580

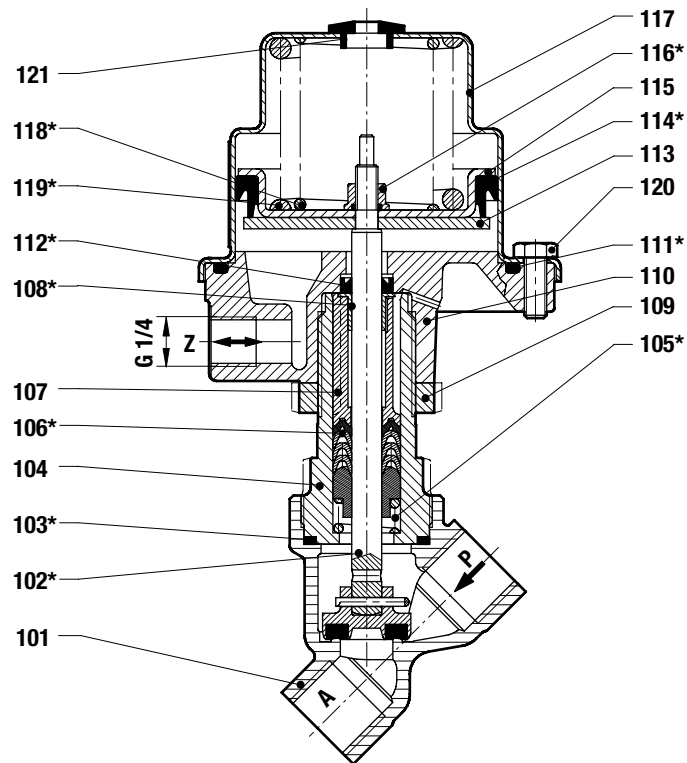
Voltage range ±10 %

Duty cycle (ED) 100 %

Protection class to EN 60529 IP 65 with mounted socket

Socket acc. to DIN EN 175301-803A

## Section View

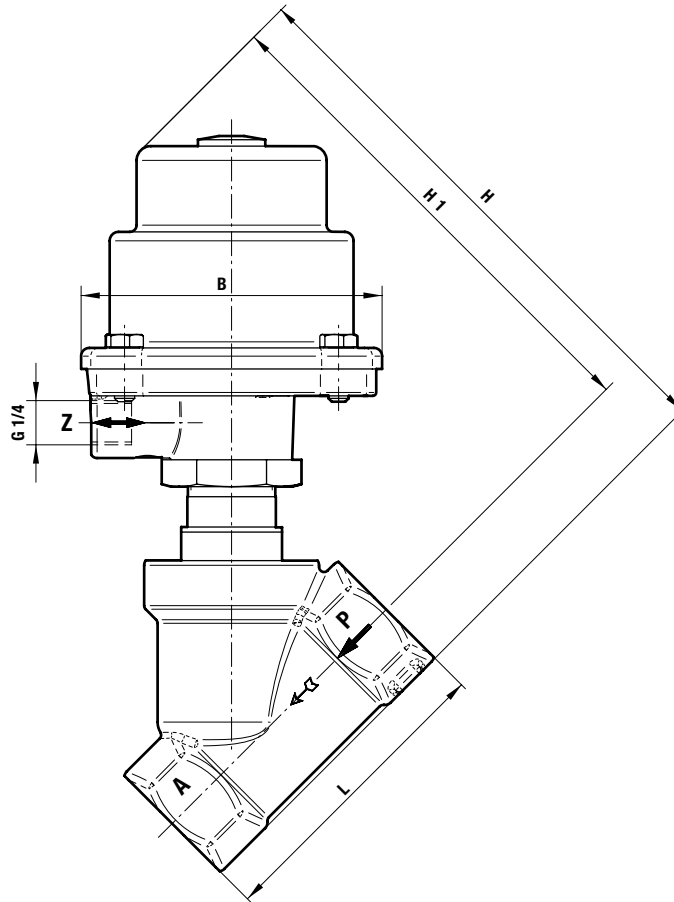


- |                                    |                                       |
|------------------------------------|---------------------------------------|
| 101 Valve body                     | *114 Lip seal                         |
| *102 Valve spindle assembly        | 115 Round plate                       |
| *103 Gasket                        | *116 Seal-Lock nut                    |
| 104 Screw piece                    | 117 Control head housing              |
| *105 Pressure spring               | *118 Pressure spring                  |
| *106 Spindle sealing               | *119 Pressure spring G 1 and G 2 only |
| 107 Spacer sleeve                  | 120 Hexagon screw                     |
| *108 Sleeve bearing                | 121 Screw tap                         |
| 109 Nut                            |                                       |
| 110 Bottom of control head housing |                                       |
| *111 O-Ring                        |                                       |
| *112 Lip seal                      |                                       |
| 113 Round plate                    |                                       |

\* These individual parts form a complete wearing unit.  
When ordering spare parts please state Cat. No. and Series No.

### General Dimensions

Solenoid rotatable 360°  
 Socket turnable 4 x 90°  
 (Socket included)



Part Number	Nominal Diameter (mm)	Connection Size	L (mm)	B (mm)	H (mm)	H1 (mm)
8258200.0000	15	G 1/2	65	89.5	154	140.5
8258300.0000	20	G 3/4	75	89.5	160	144.0
8258400.0000	25	G 1	90	89.5	171	150.5
8258500.0000	32	G 1 1/4	110	89.5	186	161.0
8258600.0000	40	G 1 1/2	120	89.5	190	162.5
8258700.0000	50	G 2	150	89.5	206	171.0

#### Note to Pressure Equipment Directive (PED):

The valves of this series, including the connection size DN 25 (G 1), are according to Art. 3 § 3 of the Pressure Equipment Directive (PED) 97/23/EG. This means interpretation and production are in accordance to engineers practice wellknown in the member countries.

The CE-sign at the valve refers not to the PED. Thus the declaration of conformity is not longer applicable for this directive.

For valves > DN 25 (G 1) Art. 3 § (1) No.1.4 applies.

The basic requirements of the Enclosure I of the PED must be fulfilled. The CE-sign at the valve includes the PED. A certificate of conformity of this directive will be available on request.

#### Note to Electromagnetic Compatibility Guideline (EEC):

The valves shall be provided with an electrical circuit which ensures the limits of the harmonised standards EN 61000-6-3 and EN 61000-6-1 are observed, and hence the requirements of the Electromagnetic Compatibility Guideline (2004/108/EG) satisfied.