

2/2-way valves DN 8 to DN 25

For hot water and steam

Indirectly solenoid actuated

Diaphragm valves

Internal thread G 1/4 to G 1 or 1/4 NPT to 1 NPT

Operating pressure 0.1 to 10 bar

82470

82680

Click-on[®]



Description (standard valve)

Solenoid valve for hot water and steam

Switching function:	normally closed
Flow direction:	determined
Differential pressure:	0.1 bar required
Fluid temperature:	0 °C up to max. +150 °C
Ambient temperature:	-10 °C up to max. +60 °C
Mounting position:	as required, preferably with solenoid vertical on top

Material

Body:	Brass (CW617N)
Seat seal:	HNBR
Internal parts:	Stainless steel, brass

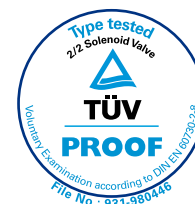
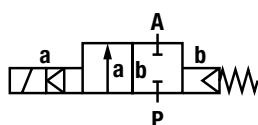
For contaminated fluids insertion of a strainer is recommended (see **Buschjost** - accessories).

Features

- High flow rate
- Damped operation
- Functional compact design
- Solenoid interchangeable without tools (**Click-on[®]**)
- Particularly suitable as a water valve according to DIN EN 60730-2-8

EC type examination up to ND 25
acc. to DIN EN 60730-2-8
Solenoid Valves
Test laboratory
TÜV Rheinland / Brandenburg

Symbol



Ordering information

To order, quote model number from table overleaf, e.g. 8247400.9101 for a DN 25 valve.

Characteristic data

Valves

Part Number Solenoid \equiv or \sim	Nominal Diameter (mm)	Connection size	Valve length (mm)	Operating pressure *		k _v -value ** (Base m ³ /h)	Weight (kg)
				min. (bar)	max. (bar)		
8247000.9101 8268000.9101	8	G 1/4 1/4 NPT	60	0.1	10	1.70	0.47
8247100.9101 8268100.9101	10	G 3/8 3/8 NPT	60	0.1	10	2.70	0.45
8247200.9101 8268200.9101	12	G 1/2 1/2 NPT	67	0.1	10	3.40	0.50
8247300.9101 8268300.9101	20	G 3/4 3/4 NPT	80	0.1	10	5.50	0.65
8247400.9101 8268400.9101	25	G 1 1 NPT	95	0.1	10	8.50	0.95

* for gases and liquid fluids up to 25 mm²/s (cSt)

State voltage [V] and frequency [Hz]

** C_v-value (US) \approx k_v-value x 1.2

Solenoid 9101

Standard voltage

DC \equiv	AC \sim 50 Hz	60 Hz
24 V	24 V	-
-	110 V	120V
-	230 V	220 V

Design acc. to DIN VDE 0580

Voltage range ± 10 %

100 % duty cycle

Protection class acc. to EN 60529 IP65

Socket Form A acc. to DIN EN 175301-803 (included)

AC with rectifier plug

Power Consumption

According to DIN VDE 0580 at coil temperature of +20 °C. In operation the power consumption of the solenoid decreases by approx. 30 %.

Solenoid	DC \equiv	AC \sim	
		Inrush	Holding
9101 *	8 W	15 VA	12 VA

*  coil only

Attention!

The conditions imposed on the Ex approvals lead to reduction of the permissible standard temperature ranges in the cases of explosion protected solenoids.

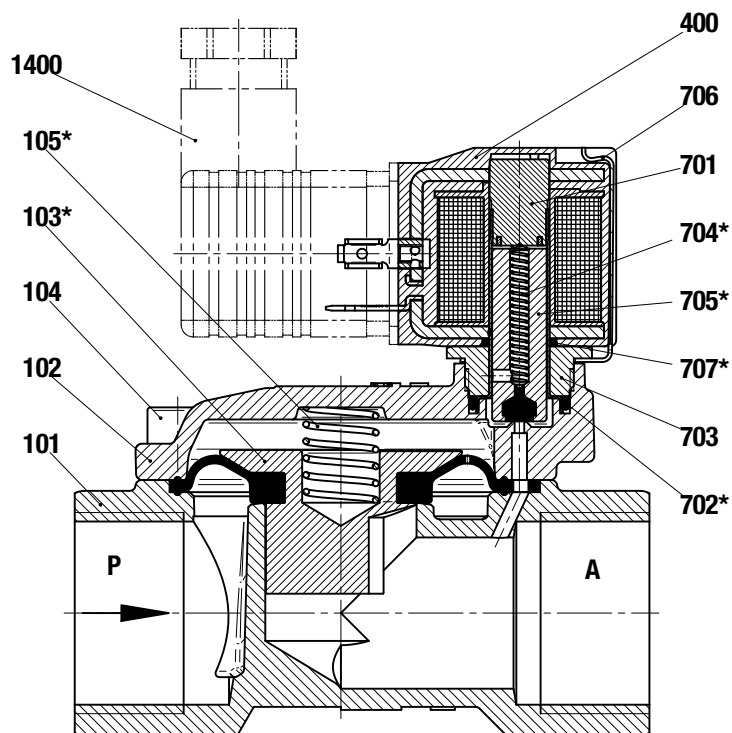
Further options (Valves)

XXXXX01.XXXX Normally open (NO)

On request

Further versions

Section View

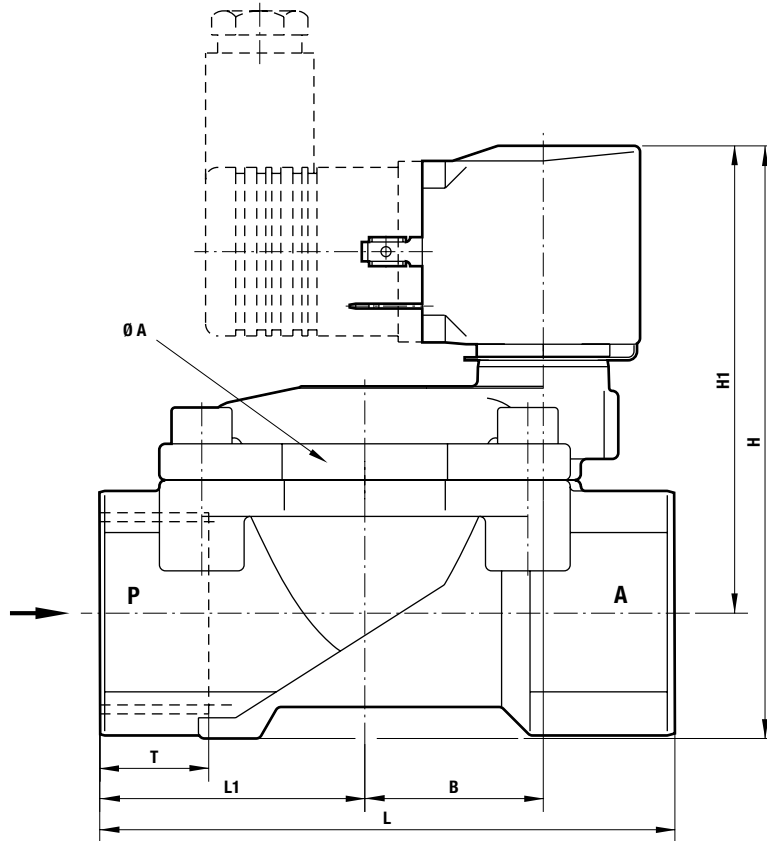


- 101 Valve body
- 102 Valve cover
- *103 Diaphragm
- 104 Allen head screw
- *105 Pressure spring
- 400 Solenoid
- 701 Core tube
- *702 O-ring
- 703 Screw piece
- *704 Pressure spring
- *705 Core
- 706 Spring clip
- *707 O-ring
- 1400 Electrical connector (included)

* These individual parts form a complete wearing unit.
 When ordering spare parts please state Cat no and series no.

General Dimensions

Solenoid rotatable 360°
 Socket turnable 4 x 90°
 (Socket included)



Part Number	Nominal Diameter (mm)	Connection size	Ø A (mm)	B (mm)	H (mm)	H1 (mm)	L (mm)	L1 (mm)	T (mm)
8247000.9101 8268000.9101	8	G 1/4 1/4 NPT	44	19,5	78.5	67	60	27.5	12.0
8247100.9101 8268100.9101	10	G 3/8 3/8 NPT	44	19,5	78.5	67	60	27.5	12.0
8247200.9101 8268200.9101	12	G 1/2 1/2 NPT	44	19,5	81.0	67	67	31.0	14.0
8247300.9101 8268300.9101	20	G 3/4 3/4 NPT	50	24,0	88.0	71.5	80	36.5	16.0
8247400.9101 8268400.9101	25	G 1 1 NPT	62	29,5	97.5	77	95	44.0	18.0

Note to Pressure Equipment Directive (PED):

The valves of this series, including the connection size DN 25 (G 1), are according to Art. 3 § 3 of the Pressure Equipment Directive (PED) 97/23/EG. This means interpretation and production are in accordance to engineers practice wellknown in the member countries.

The CE-sign at the valve refers not to the PED. Thus the declaration of conformity is not longer applicable for this directive.

For valves > DN 25 (G 1) Art. 3 § (1) No.1.4 applies.

The basic requirements of the Enclosure I of the PED must be fulfilled. The CE-sign at the valve includes the PED. A certificate of conformity of this directive will be available on request.

Note to Electromagnetic Compatibility Guideline (EEC):

The valves shall be provided with an electrical circuit which ensures the limits of the harmonised standards EN 61000-6-3 and EN 61000-6-1 are observed, and hence the requirements of the Electromagnetic Compatibility Guideline (2004/108/EG) satisfield.